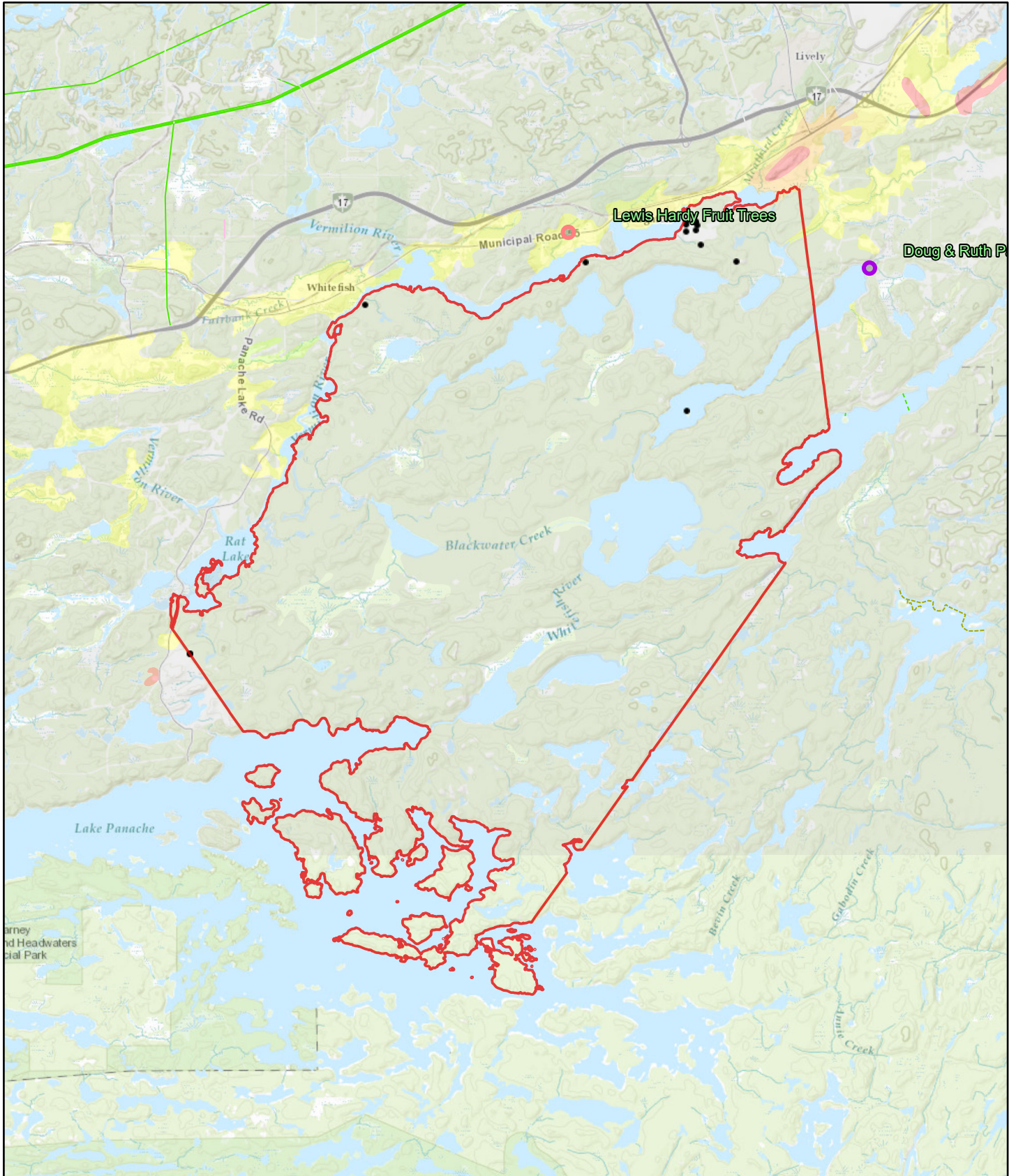


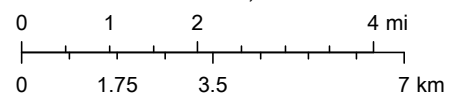
Atikameksheng - AN Agriculture Asset Inventory



7/14/2020, 8:39:52 AM

1:200,000

- Anishnabek Nations' Reserves
- Water Well Locations
- Bees and Beekeeping
- Fruit Trees
- Hydro Line
- Natural Gas Pipeline
- Submerged Communication Line
- Submerged Hydro Line
- Unknown Pipeline
- Unknown Transmission Line
- Class 2 moderate limitations on use for crops
- Class 3 moderately severe limitations on use for crops
- Class 4 Severe limitations on use for crops
- Class 6 Natural grazing only; no improvements feasible
- Class 7 No capability for agriculture



Sources: Esri, HERE, Garmin, Intermap, increment P Corp., GEBCO, USGS, FAO, NPS, NRCAN, GeoBase, IGN, Kadaster NL, Ordnance Survey, Esri Japan, METI, Esri China (Hong Kong), (c) OpenStreetMap contributors, and the GIS User Community